



skopein



Years of  
proven  
experience

# PORTABLE HD ENDOSCOPY UNIT SKP-FHD-1080



Discover more of our product at: [www.divinemeditech.in](http://www.divinemeditech.in)



# PORTABLE HD ENDOSCOPY UNIT SKP-FHD-1080

The Portable Endoscopy is an advanced device which enables a surgeon the ease of mobility along with compact All-in-One unit allowing enhanced HD imagery having in-built light source, full HD camera, high aspect medical grade monitor display and integrated HD recorder.

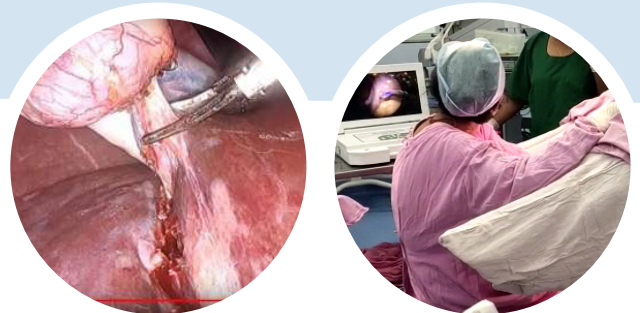


## TECHNICAL DATA

- Camera Head : 1 X 1/3 Cmos
- Screen Size : 17.3 Inches
- Aspect Ratio : 16:9
- Resolution : 1920 X 1080 P
- Head Keys: Four Programmable Camera Head Keys
- Digital magnification: Up to 10x
- Led light source: focus coherent lens technology
- Video Output : 1xHDMI
- Voltage Range : 100-240V (60VA)
- Frequency : 50-60 Hz

## PRODUCT FEATURES

- Full High Definition 1920 x 1080 Pixels.
- Built-in-video image recording.
- Medical Grade full HD Monitor.
- Programmable head keys.
- Anywhere portability, highly compact.
- Pre set mode for various specialties.
- Suitable for diagnosis and surgeries.
- Digital 1-CMOS Full HD Camera Console.
- Digital Zoom with freeze feature for illustration.
- Built-in- LED light source



## ORDERING DATA

SKP-FHD-1080: Digital 1-CMOS FHD Camera Console With inbuilt USB recording system, Camera Cable with head, Focusable coupler, HDMI-HDMI-Cable, Power Cord, Power Adaptor, Briefcase & User Manual

## Contact Us:

### DIVINE MEDITECH PRIVATE LIMITED



#### Corporate Offices:-

G-197, Sector-63, Noida, Gautam Buddha  
Nagar, Uttar Pradesh- 201309

☎ 91-9818396505 ✉ info@divinemeditech.in  
🌐 www.divinemeditech.in



#### Manufacturing Unit:-

Plot No.: 18, Phase III, Industrial Area, Tahliwal,  
Dist. Una, H.P. - 174301 (India)

☎ 91-9818396505 ✉ info@divinemeditech.in  
🌐 www.divinemeditech.in